



7HO11314 MOGUL

MOUNTFIELD SSI DCY MOGUL-ET

HO8403006972816 100% RHA-NA TR TV TL TY TD

Born: 6/22/2010 aAa: 435 DMS: 345,456
Breeder: Marshfield Farms, Marcellus, NY

Production					
USDA-CDCB Genomic Evaluation					
(Rel 76%)	+1,449 Milk	% Test Lbs.	Net Merit (73%)	+\$784	
Protein	+.03	+50	Cheese Merit	+\$833	
Fat	+.10	+78	Fluid Merit	+\$737	
Type					
USDA/HA Genomic Evaluation					
+3.03	Type	Rel 76%	GTPI SM +2403		
HA Composites					
+3.19	UDC	+3.17	FLC	+1.41BD +1.75D	
Fitness					
SCS 2.66 (Rel 73%)	PL +4.9 (Rel 69%)	DPR +0.0 (Rel 67%)			
Calving Ease (%DBH)	Service Sire	6.5%	97% Rel	1,680 Obs	
	Daughter	4.6%	64% Rel		
Sire Conception Rate	+3.7	98% Rel	14,237 Obs		
Summary Date 04/2013					

COYNE-FARMS DORCY-ET (VG-87)

SANDY-VALLEY BOLTON-ET (EX-90-GM)

MOUNTFIELD MARSH MAXINE-ET (VG-88-EX-MS-DOM)

2-03 159d 14,320M 4.3% 611F 3.2% 454P

COYNE-FARMS BRET DAFFERS-ET (EX-91-EX-MS-DOM)

PASEN MARSH-ET

PINE-TREE MISSY MIRANDA-ET (VG-86-DOM)

2-01 365d 28,350M 4.3% 1,232F 3.6% 1,007P
3-08 365d 35,550M 4.9% 1,730F 3.7% 1,325P 3X

DTR: Mountfield S Moraco-ET (EX-90-EX-MS)

2-06 365d 30,170M 3.8% 1,155F 3.1% 931P

DTR: Mountfield S Marcellus-ET (VG-87)

3-03 365d 27,860M 4.0% 1,111F 3.3% 914P

DTR: Mountfield Meriel-ET (EX-90-EX-MS)

4-06 365d 37,570M 3.7% 1,405F 3.3% 1,227P

DTR: Mountfield Madra-ET (VG-86-DOM)

3-10 305d 25,970M 3.7% 950F 3.1% 808P

DTR: Mountfield Pm Micky-ET (VG-85)

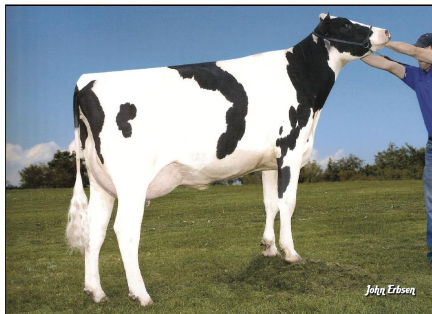
4-00 305d 25,290M 4.3% 1,094F 3.2% 809P

SIRE: O-BEE MANFRED JUSTICE-ET (EX-94-GM)

DAM: WESSWOOD-HC RUDY MISSY-ET (EX-92-3E-EX-MS-GMD-DOM)

4-11 365d 40,880M 4.1% 1,665F 3.2% 1,308P 3X

- Breed leading sire with a pedigree free of Shottle, Goldwyn and PLANET
- Heavily used sire father for profit
- GTPI, NM\$, Type and high fertility... he has it all



Linear	-2	-1	0	1	2	
STATURE						1.75 T
DAIRY FORM						1.57 O
STRENGTH						.95 S
BODY DEPTH						.91 D
RUMP WIDTH						1.56 W
RUMP ANGLE						.75 S
LEGS SIDE VIEW						1.76 P
LEGS REAR VIEW						3.67 S
FOOT ANGLE						2.81 S
FEET & LEGS SCORE						3.37 H
FORE ATTACHMENT						4.09 S
REAR UDDER HEIGHT						4.79 H
REAR UDDER WIDTH						4.41 W
UDDER CLEFT						1.61 S
UDDER DEPTH						2.98 S
FRONT TEAT PLACE						1.65 C
REAR TEAT PLACE						1.38 C
FRONT TEAT LENGTH						.88 S

MOUNTFIELD MARSH MAXINE-ET (VG-88-EX-MS-DOM)